

Instrument Key

Conventionals

- ETC 54 19 deg @ 575w
- ETC 54 26 deg @ 575w
- ETC 54 36 deg @ 575w
- ETC 54 PARNet @ 575w
- Hanging Practical Vintage Lightbulb @ 60w

Intelligent Fixtures

- ETC 54 LUSTR II 19 deg @ 140w
- ETC 54 LUSTR II 26 deg @ 140w
- ETC 54 LUSTR II 36 deg @ 140w
- Color Source PAR MR @ 90w
- ChromaQ Colorforce II 72 @ 800w

Moving Lights

- High End SoliFrame 2000 @ 800w
- MAC Encore Performance CLD @ 650w
- MAC Viper Performance CLD @ 1,225w
- MAC Viper Wash CLD @ 1,225w

Accessories

- 24" Sidescreen
- 7.5' Barndoor

TYPICAL NOTATION

Channel #

Channel

REVISIONS

Revision	Date	Changes	Author
1	9.28.21	Preliminary Plot	MBE
2	10.21	Special Adds and Sperry Updates	MBE
3	2.27.22	Cleaning and Maintenance	MBE

NOTES

For detailed drafting of practicals see Plate 6.
 Please drop all color before focus.
 Please see Channel Hookup for Color and Purpose information.
 All units 1'6" apart unless otherwise notated.

MCKENNA EBERT
 L I G H T I N G D E S I G N
 WWW.MCKENNAEBERT.COM | EBERTMCKENNA@GMAIL.COM
 708.898.0940

THE DESIGNER IS UNWAIVERED TO DETERMINE THE STRUCTURAL OR ELECTRICAL APPROPRIATENESS OF THIS DESIGN, AND WILL NOT ASSUME RESPONSIBILITY FOR APPROVE ENGINEERING, CONSTRUCTION, FINISHING OR USE. ALL MATERIALS AND CONSTRUCTION MUST COMPLY WITH THE MOST STRINGENT APPLICABLE FEDERAL AND LOCAL FIRE, SAFETY, ENERGY, AND ENVIRONMENTAL CODES. THIS DOCUMENT IS PROVIDED AND INTENDED SOLELY FOR THE PARTICULAR PRODUCTION AND DUPLICATION OR USE FOR ANY OTHER PURPOSE IS STRICTLY PROHIBITED.

THE INFINITE ENERGY OF ADA LOVELACE
 MUSIC BY KAMALA SANKARAM
 LIBRETTO BY ROBE HANDEL
 BOSTON UNIVERSITY SCHOOL OF THEATRE
 JOAN & EDGAR BOOTH THEATRE
 800 COMMONWEALTH AVE.
 BOSTON, MA 02215

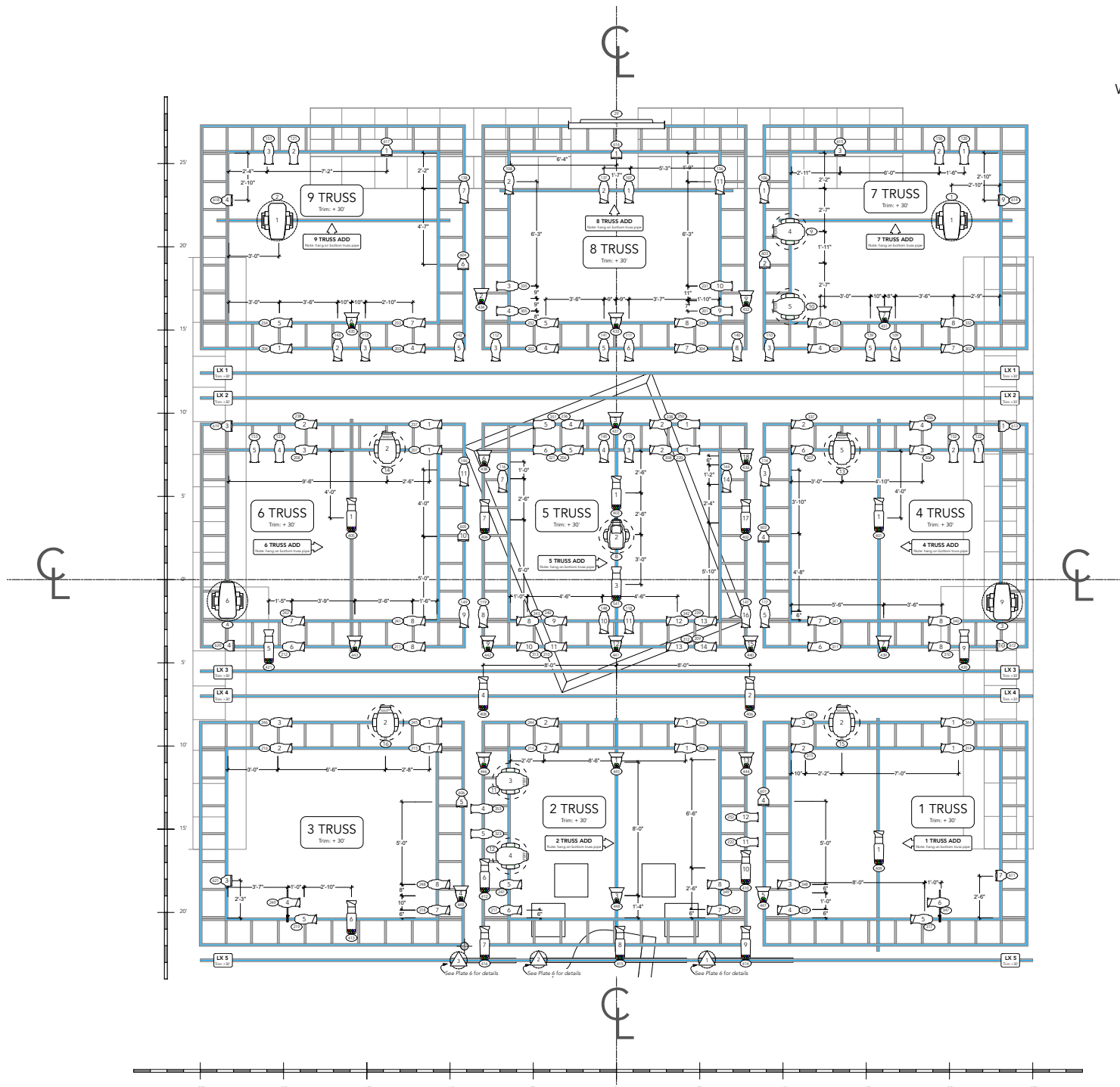
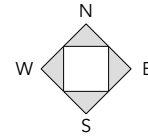
LIGHTING DESIGN BY: MCKENNA EBERT
 ASST. LIGHTING DESIGNER: ANJULS GOODEARL
 PRODUCTION ELECTRICIAN: ISAAC OLSON
 DIRECTED BY: EMILY RANI
 SCENIC DESIGN BY: ANJKA RECHERT
 COSTUME DESIGN BY: LOGAN SAMUELS

SCALE: 0' - 3/8" = 1' - 0"
 DRAWN BY: MCKENNA EBERT
 CREATED: 9.28.21
 DATE: 3.25.22

PLATE
1
 OF 6

Scale:
 3/8" = 1'

Overhead &
 Galleries



Instrument Key

Conventionals

- ETC S4 19 deg @ 575w
- ETC S4 26 deg @ 575w
- ETC S4 36 deg @ 575w
- ETC S4 PAR36 @ 575w
- Hanging Practical Vintage Lightbulb @ 60w

Intelligent Fixtures

- ETC S4 LUSTR 19 deg @ 140w
- ETC S4 LUSTR 26 deg @ 140w
- ETC S4 LUSTR 36 deg @ 140w
- Color Source PAR MR @ 90w
- ChromaQ ColorSource II 72 @ 800w

Moving Lights

- High End SoloFrame 2000 @ 600w
- MAC Encore Performance CLD @ 600w
- MAC Viper Performance CLD @ 1,225w
- MAC Viper Wash CLD @ 1,225w

Accessories

- 24" Sidearm
- 7.5" Bandoor

TYPICAL NOTATION

Truss #
 Channel

REVISIONS

Revision	Date	Changes	Author
1	9.26.21	Preliminary Plot	AMEE
2	10.21	Speech Adds and Sperry Update	AMEE
3	2.27.22	Cleaning and Maintenance	AMEE

NOTES

For detailed drafting of practicals see Plate 6.
 Please drop all color before focus.
 Please see Channel Hookup for Color and Purpose information.
 All units 1/8" apart unless otherwise notated.

MCKENNA EBERT
 L I D H T I N G D E S I G N
 WWW.MCKENNAEBERT.COM | EBERTMCKENNAEBERT@GMAIL.COM
 708.898.5040

THE DESIGNER IS UNWAIVING TO DETERMINE THE STRUCTURAL OR ELECTRICAL APPROPRIATENESS OF THIS DESIGN, AND WILL NOT ASSUME RESPONSIBILITY FOR APPROVE ENGINEERING, CONSTRUCTION, INSTALLATION OR USE. ALL MATERIALS AND CONSTRUCTION MUST COMPLY WITH THE MOST STRINGENT APPLICABLE FEDERAL AND LOCAL FIRE, SAFETY, ENERGY, AND ENVIRONMENTAL CODES. THIS DOCUMENT IS PROVIDED AND INTENDED SOLELY FOR THE PARTICULAR PRODUCTION AND DUPLICATION OR USE FOR ANY OTHER PURPOSE IS STRICTLY PROHIBITED.

THE INFINITE ENERGY OF ADA LOVELACE

MUSIC BY KAMALA SANKARAM
 LIBRETTO BY ROBE HANDEL

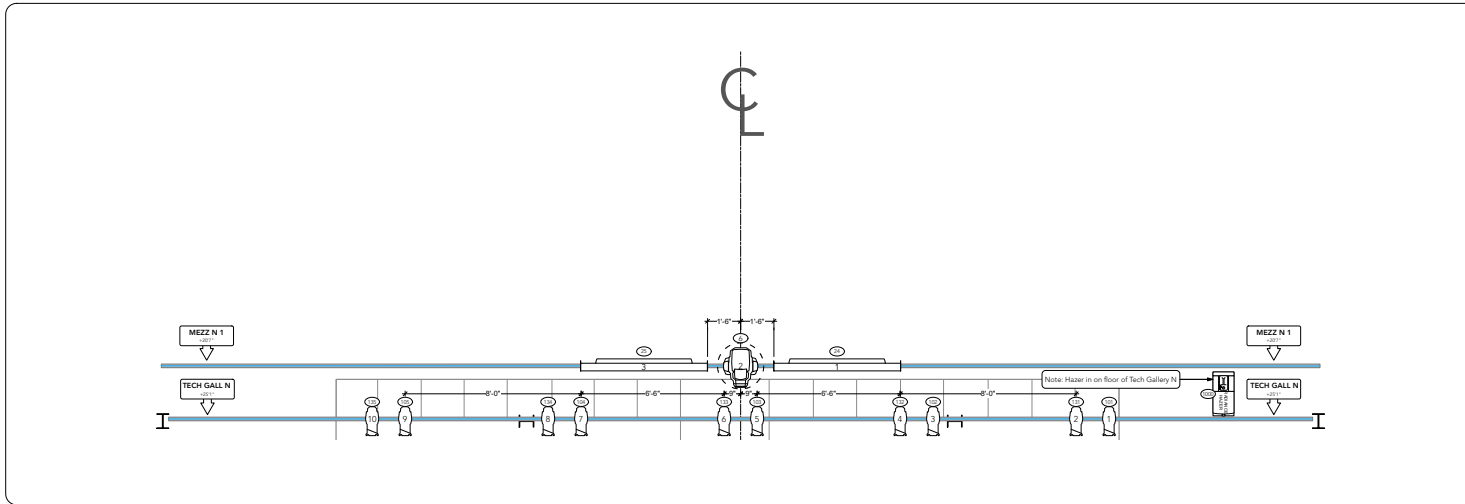
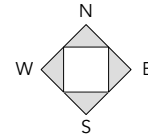
BOSTON UNIVERSITY SCHOOL OF THEATRE
 JOAN & EDGAR BOOTH THEATRE
 800 COMMONWEALTH AVE.
 BOSTON, MA 02115

LIGHTING DESIGNER: MCKENNA EBERT
 ASST. LIGHTING DESIGNER: ANGUS GOODEARL
 PRODUCTION ELECTRICIAN: ISAIAH OLSON

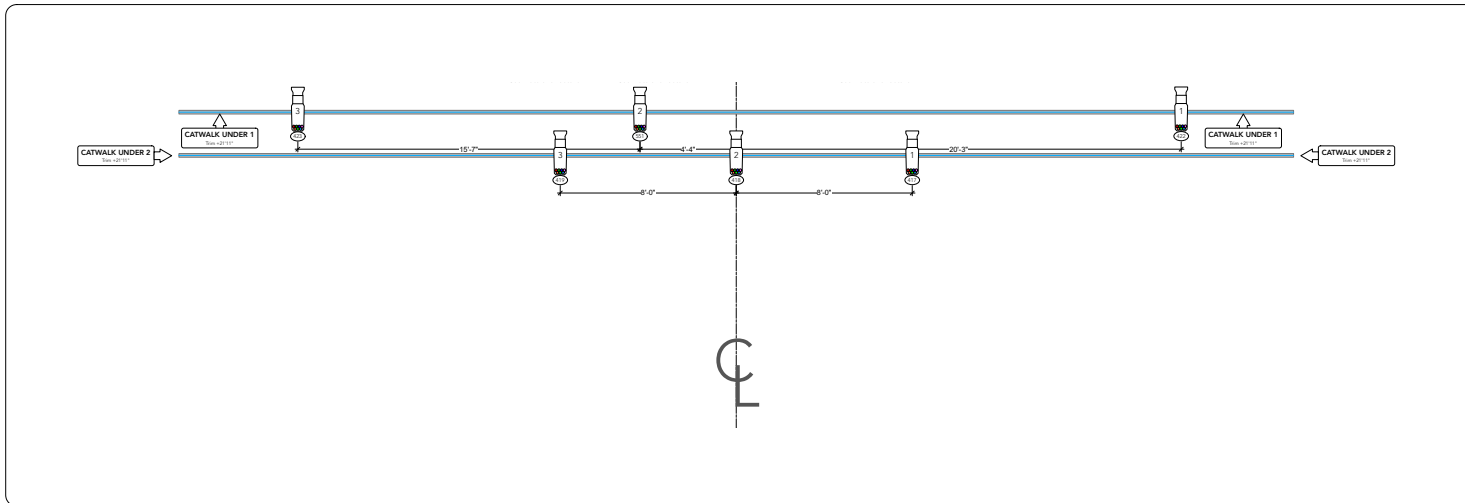
DIRECTED BY: EMILY RANI
 SCENIC DESIGN BY: ANIKA REICHERT
 COSTUME DESIGN BY: LOGAN SAMUELS

SCALE: 0' - 1/2" = 1' - 0"	PLATE: 2
DRAWN BY: MCKENNA EBERT	
CREATED: 9.24.21	
DATE: 3.25.22	

Overhead



North



South

Instrument Key

- Conventionals**
- ETC S4 19 deg @ 575w
 - ETC S4 26 deg @ 575w
 - ETC S4 36 deg @ 575w
 - ETC S4 PARNet @ 575w
 - Hanging Practical Vintage Lightbulbs @ 60w
- Intelligent Fixtures**
- ETC S4 LUSTR II 19 deg @ 140w
 - ETC S4 LUSTR II 26 deg @ 140w
 - ETC S4 LUSTR II 36 deg @ 140w
 - Color Source PAR MR @ 90w
 - ChronaQ Colorforce II 72 @ 800w
- Moving Lights**
- High End SoliFrame 2000 @ 600w
 - MAC Encore Performance CLD @ 600w
 - MAC Viper Performance CLD @ 1,225kw
 - MAC Viper Wash CLD @ 1,225kw
- Accessories**
- 34" Sidearm
 - 7.5" Barndoor

TYPICAL NOTATION



REVISIONS

Revision	Date	Changes	Author
1	9/24/21	Preliminary Plot	MBE
2	10/21	Speech Add and Sperry Update	MBE
3	2/27/22	Cleaning and Maintenance	MBE

NOTES

Please drop all color before focus.
Please see Channel Hookup for Color and Purpose information.
All units 1'6" apart unless otherwise notated.

MCKENNA EBERT
L I D H T I N G D E S I G N
WWW.MCKENNAEBERT.COM | EBERTMCKENNA@GMAIL.COM
708.898.0340

THE DESIGNER IS UNQUALIFIED TO DETERMINE THE STRUCTURAL OR ELECTRICAL APPROPRIATENESS OF THIS DESIGN, AND WILL NOT ASSUME RESPONSIBILITY FOR APPROVE ENGINEERING, CONSTRUCTION, INSTALLATION OR USE. ALL MATERIALS AND CONSTRUCTION MUST COMPLY WITH THE MOST STRINGENT APPLICABLE FEDERAL AND LOCAL, FIRE, SAFETY, ENERGY, AND ENVIRONMENTAL CODES. THIS DOCUMENT IS PROVIDED AND INTENDED SOLELY FOR THE PARTICULAR PRODUCTION AND DUPLICATION OR USE FOR ANY OTHER PURPOSE IS STRICTLY PROHIBITED.

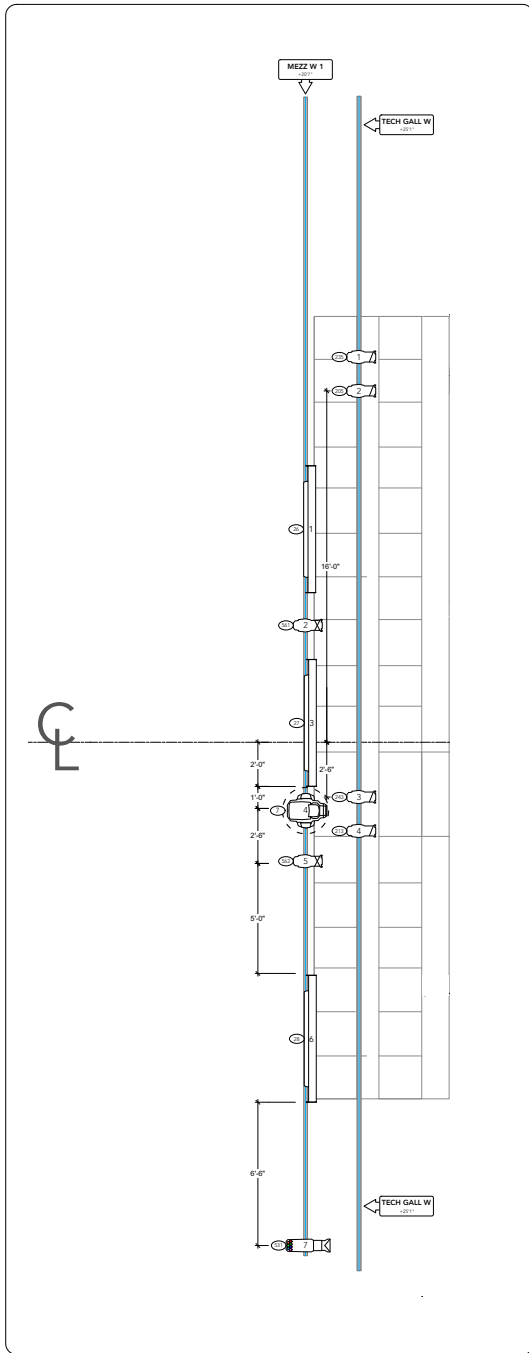
THE INFINITE ENERGY OF ADA LOVELACE

MUSIC BY KAMALA SANKARAM
LIBRETTO BY ROBE HANDEL
BOSTON UNIVERSITY SCHOOL OF THEATRE
JOAN & EDGAR BOOTH THEATRE
800 COMMONWEALTH AVE.
BOSTON, MA 02115

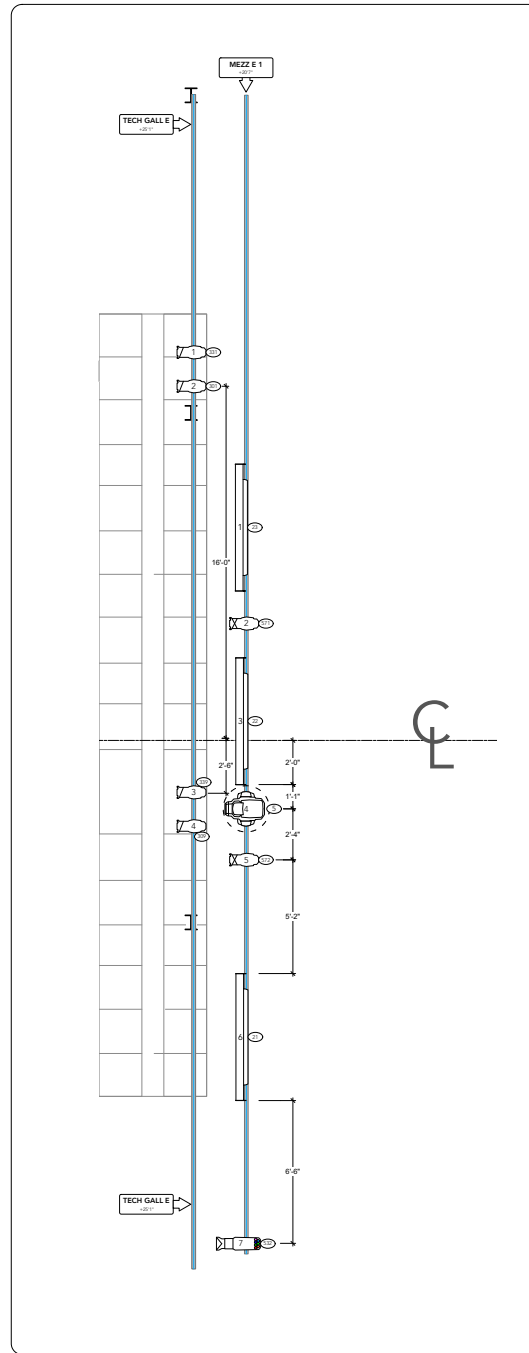
LIGHTING DESIGN BY: MCKENNA EBERT
ASST. LIGHTING DESIGNER: ANGLUS GOODEARL
PRODUCTION ELECTRICIAN: ISAIAH OLSON
DIRECTED BY: EMILY RANI
SCENIC DESIGN BY: ANIKA REICHERT
COSTUME DESIGN BY: LOGAN SAMUELS

SCALE: 0' - 1/2" = 1' - 0"	PLATE: 3
DRAWN BY: MCKENNA EBERT	OF 6
CREATED: 9.24.21	
DATE: 3.25.22	

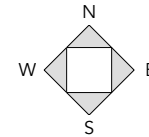
North & South Galleries



West



East



Instrument Key

Conventionals

- ETC S4 19 deg @ 575w
- ETC S4 26 deg @ 575w
- ETC S4 36 deg @ 575w
- ETC S4 PARNet @ 575w
- Hanging Practical Vintage Lightbulb @ 60w

Intelligent Fixtures

- ETC S4 LUSTR II 19 deg @ 140w
- ETC S4 LUSTR II 26 deg @ 140w
- ETC S4 LUSTR II 36 deg @ 140w
- Color Source PAR MR @ 90w
- ChromaQ Colorforce II 72 @ 800w

Moving Lights

- High End Solafire 2000 @ 600w
- MAC Encore Performance CLD @ 600w
- MAC Viper Performance CLD @ 1,225w
- MAC Viper Wash CLD @ 1,225w

Accessories

- 24" Sidearm
- 7.5" Barndoor

TYPICAL NOTATION

Unit #

Channel

REVISIONS

Revision	Date	Changes	Author
1	9/28/21	Preliminary Plot	MKE
2	10/21	Speech Adds and Sperry Updates	MKE
3	2/27/22	Cleaning and Maintenance	MKE

NOTES

Please drop all color before focus.
Please see Channel Hookup for Color and Purpose information.
All units 1'6" apart unless otherwise notated.

MCKENNA EBERT
L I D H T I N G D E S I G N
WWW.MCKENNAEBERT.COM | EBERTMCKENNA@GMAIL.COM
708.898.0940

THE DESIGNER IS UNQUALIFIED TO DETERMINE THE STRUCTURAL OR ELECTRICAL APPROPRIATENESS OF THIS DESIGN, AND WILL NOT ASSUME RESPONSIBILITY FOR IMPROPER ENGINEERING, CONSTRUCTION, PACKAGING OR USE. ALL MATERIALS AND CONSTRUCTION MUST COMPLY WITH THE MOST STRINGENT APPLICABLE FEDERAL AND LOCAL, FIRE, SAFETY, ENERGY, AND ENVIRONMENTAL CODES. THIS DOCUMENT IS PROVIDED AND INTENDED SOLELY FOR THE PARTICULAR PRODUCTION AND DUPLICATION OR USE FOR ANY OTHER PURPOSE IS STRICTLY PROHIBITED.

THE INFINITE ENERGY OF ADA LOVELACE
MUSIC BY KAMALA SANKARAM
LIBRETTO BY ROBE HANDEL

BOSTON UNIVERSITY SCHOOL OF THEATRE
JOAN & EDGAR BOOTH THEATRE
800 COMMONWEALTH AVE.
BOSTON, MA 02215

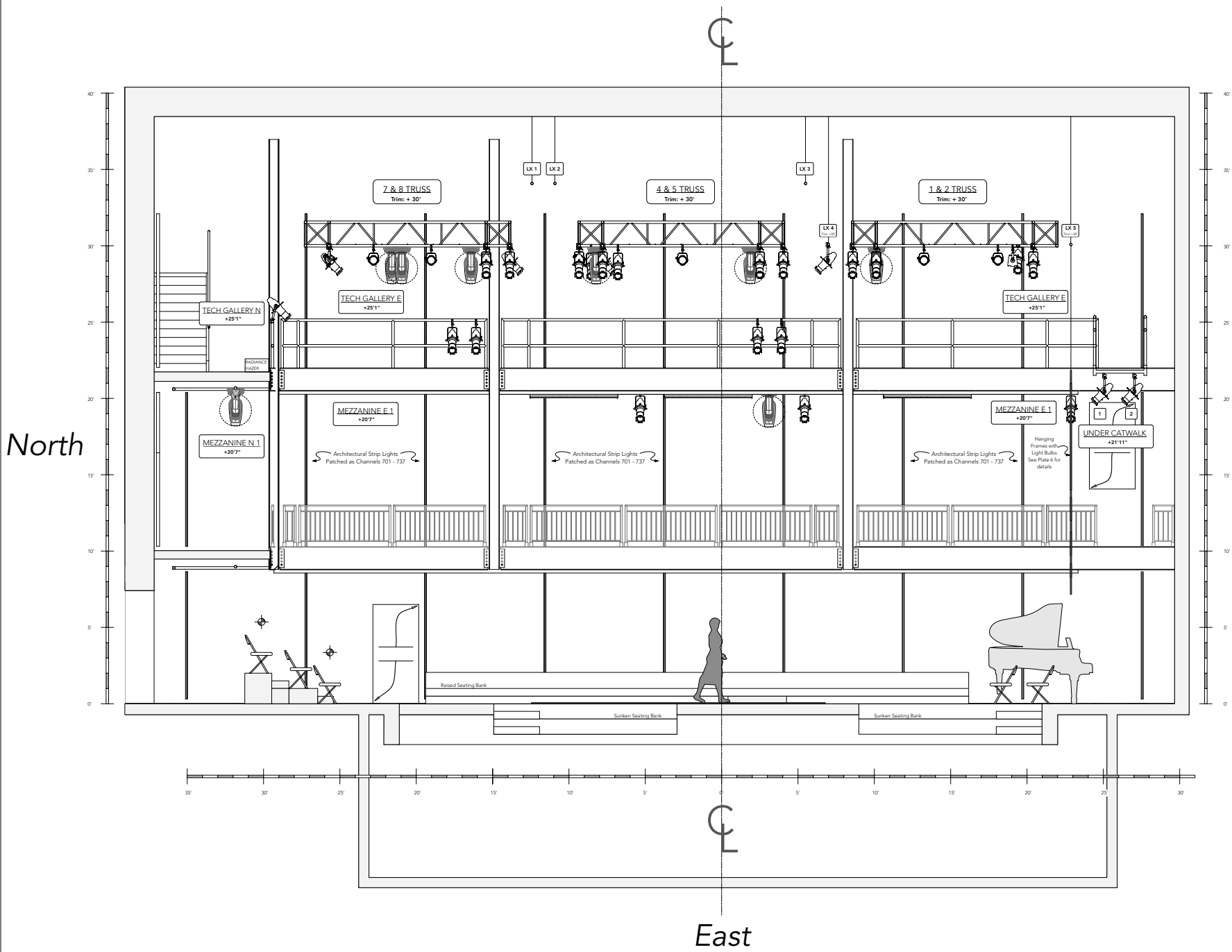
LIGHTING DESIGNER: MCKENNA EBERT
ASST. LIGHTING DESIGNER: ANGLUS GOODEARL
PRODUCTION ELECTRICIAN: ISAAC OLSON

DIRECTED BY: EMILY RANI
SCENIC DESIGN BY: ANIKA REICHERT
COSTUME DESIGN BY: LOGAN SAMUELS

SCALE: 0' - 1/2" = 1' - 0"
DRAWN BY: MCKENNA EBERT
CREATED: 9/24/21
DATE: 3/25/22

PLATE: **4**
OF 6

East & West Galleries



Instrument Key

Conventionals

- ETC S4 19 deg @ 575w
- ETC S4 26 deg @ 575w
- ETC S4 36 deg @ 575w
- ETC S4 PAR/Nal @ 575w
- Hanging Practical Vintage Lightbulb @ 60w

Intelligent Fixtures

- ETC S4 LUSTRII 19 deg @ 140w
- ETC S4 LUSTRII 26 deg @ 140w
- ETC S4 LUSTRII 36 deg @ 140w
- Color Source PAR MR @ 90w
- ChromaQ Colorforce II 72 @ 800w

Moving Lights

- High End SoliFrame 2000 @ 600w
- MAC Encore Performance CLD @ 600w
- MAC Viper Performance CLD @ 1,225kw
- MAC Viper Wash CLD @ 1,225kw

Accessories

- 24" Sidearm
- 7.5" Bandoor

TYPICAL NOTATION

Unit #

Channel

REVISIONS

Revision	Date	Changes	Author
1	9.28.21	Preliminary Plot	AME
2	10.21	Special Adds and Sperry Updates	AME
3	2.27.22	Drawing and Maintenance	AME

NOTES

Please see Plate 6 for detailed drafting of practical units.

MCKENNA EBERT
 L I D E R S
 WWW.MCKENNAEBERT.COM | EBERTMCKENNAEBERT@GMAIL.COM
 708.899.5040

THE DESIGNER IS UNWAIVERED TO DETERMINE THE STRUCTURAL OR ELECTRICAL APPROPRIATENESS OF THIS DESIGN, AND WILL NOT ASSUME RESPONSIBILITY FOR APPROVE ENGINEERING, CONSTRUCTION, INSTALLING, OR USE. ALL MATERIALS AND CONSTRUCTION MUST COMPLY WITH THE MOST STRINGENT APPLICABLE FEDERAL AND LOCAL FIRE, SAFETY, ENERGY, AND ENVIRONMENTAL CODES. THIS DOCUMENT IS PROVIDED AND INTENDED SOLELY FOR THE PARTICULAR PRODUCTION AND DUPLICATION OR USE FOR ANY OTHER PURPOSE IS STRICTLY PROHIBITED.

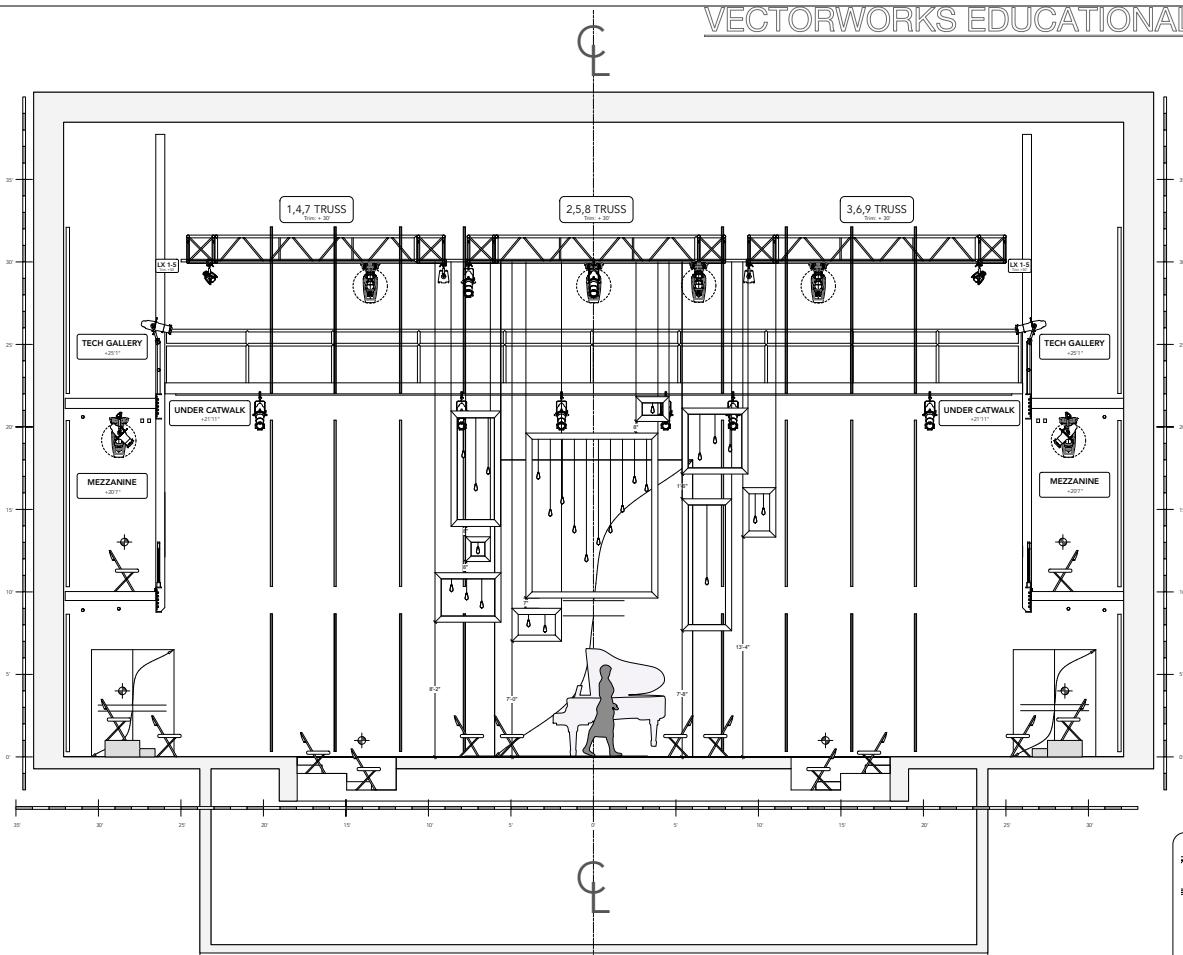
THE INFINITE ENERGY OF ADA LOVELACE
 MUSIC BY KAMALA SANKARAM
 LIBRETTO BY ROBE HANDEL
 BOSTON UNIVERSITY SCHOOL OF THEATRE
 JOAN & EDGAR BOOTH THEATRE
 800 COMMONWEALTH AVE.
 BOSTON, MA 02215

LIGHTING DESIGN BY: MCKENNA EBERT
 ASST. LIGHTING DESIGNER: ANJUS GOODEARL
 PRODUCTION ELECTRICIAN: ISAAC OLSON
 DIRECTED BY: EMILY RANI
 SCENIC DESIGN BY: ANIKA REICHERT
 COSTUME DESIGN BY: LOGAN SAMUELS

SCALE: 0' - 1/2" = 1' - 0"
 DRAWN BY: MCKENNA EBERT
 CREATED: 9.28.21
 DATE: 3.25.22

PLATE
5
 OF 6

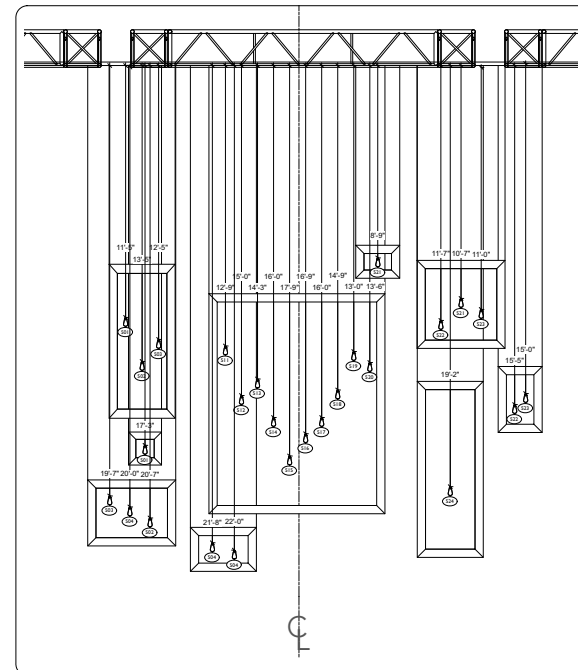
East Section



South
Scale: 3/8" = 1' - 0"

Frame Detail

Scale: 1/2" = 1' - 0"



Instrument Key

Conventionals

- ETC S4 19 deg @ 575w
- ETC S4 26 deg @ 575w
- ETC S4 36 deg @ 575w
- ETC S4 PARNet @ 575w
- Vintage Lightbulb @ 60w

Intelligent Fixtures

- ETC S4 LUSTR R 19 deg @ 140w
- ETC S4 LUSTR R 26 deg @ 140w
- ETC S4 LUSTR R 36 deg @ 140w
- Color Source PAR MR @ 90w
- ChromaQ Colorforce II 72 @ 800w

Moving Lights

- High End SolidFrame 2000 @ 600w
- MAC Encore Performance CLD @ 600w
- MAC Viper Performance CLD @ 1,225w
- MAC Viper Wash CLD @ 1,225w

TYPICAL NOTATION

Light #
Channel

REVISIONS

Revision	Date	Change	Author
1	9/2/21	Preliminary Plot	MKE
2	10/21	Special Adds and Sperry Updates	MKE
3	2/27/22	Cleaning and Maintenance	MKE

NOTES

All practicals hang from Lineast 5

MCKENNA EBERT
L I D H T I N G D E S I G N
WWW.MCKENNAEBERT.COM | EBERTMCKENNA@GMAIL.COM
708.898.0940

THE DESIGNER IS UNQUALIFIED TO DETERMINE THE STRUCTURAL OR ELECTRICAL APPROPRIATENESS OF THIS DESIGN, AND WILL NOT ASSUME RESPONSIBILITY FOR APPROVE ENGINEERING, CONSTRUCTION, INSTALLATION, OR USE. ALL MATERIALS AND CONSTRUCTION MUST COMPLY WITH THE MOST STRINGENT APPLICABLE FEDERAL AND LOCAL, FIRE, SAFETY, ENERGY, AND ENVIRONMENTAL CODES. THIS DOCUMENT IS PROVIDED AND INTENDED SOLELY FOR THE PARTICULAR PRODUCTION AND DUPLICATION OR USE FOR ANY OTHER PURPOSE IS STRICTLY PROHIBITED.

THE INFINITE ENERGY OF ADA LOVELACE
MUSIC BY KAMALA SANKARAM
LIBRETTO BY ROBE HANDEL
BOSTON UNIVERSITY SCHOOL OF THEATRE
JOAN & EDGAR BOOTH THEATRE
800 COMMONWEALTH AVE.
BOSTON, MA 02115

LIGHTING DESIGNER: MCKENNA EBERT
ASST. LIGHTING DESIGNER: ANGLUS GOODEARL
PRODUCTION ELECTRICIAN: ISAIAH OLSON
DIRECTED BY: EMILY RANU
SCENIC DESIGN BY: ANIKA REICHERT
COSTUME DESIGN BY: LOGAN SAMUELS

SCALE: 0' - 3/8" = 1' - 0"	PLATE: 6
DRAWN BY: MKE	
CREATED: 9.24.21	
DATE: 3.25.22	

South Elevation & Detail